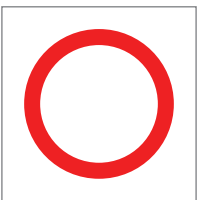
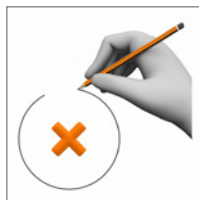


Lectoescritura en mayúsculas

VOCALES



Rodea en rojo las fotos que empiezan
por la vocal indicada en cada ficha.



Rodea en rojo las fotos que empiecen por **A**



UVA



OVEJA



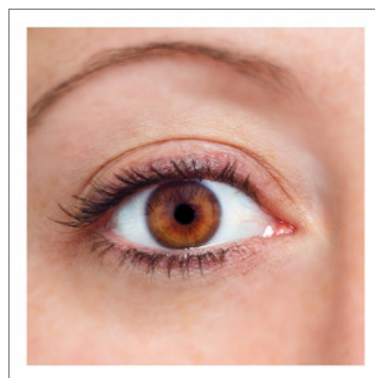
ARBOL



ABEJA



ESCURRIDOR



OJO



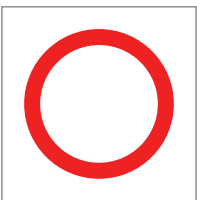
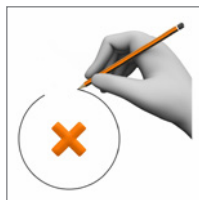
ESPONJA



IMPRESORA



ESTRELLA



Rodea en rojo las fotos que empiecen por **E**



ESCALERA



ABANICO



ESTRELLA



OSITO



ESPONJA



IMPERDIBLE



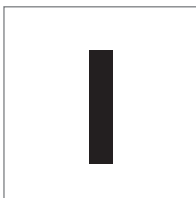
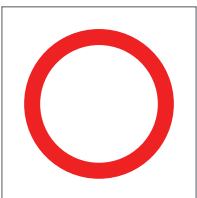
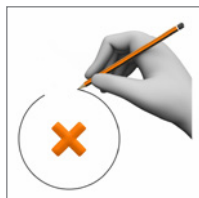
ACEITERA



AJO



ARBOL



Rodea en rojo las fotos que empiecen por **I**



ABANICO



OLLA



AJO



IMPERDIBLE



ABEJA



OVEJA



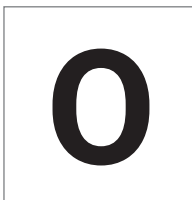
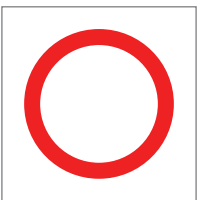
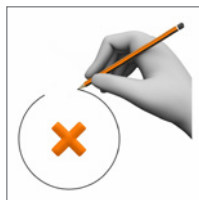
ESTROPAJO



IMPRESORA



ESCURRIDOR



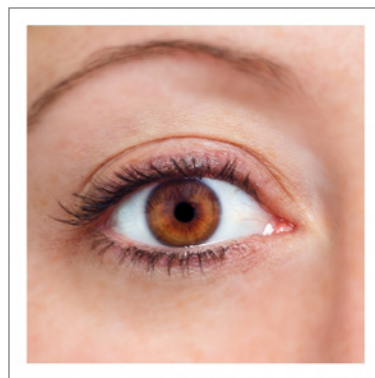
Rodea en rojo las fotos que empiecen por **O**



OSITO



ESPONJA



OJO



IMPRESORA



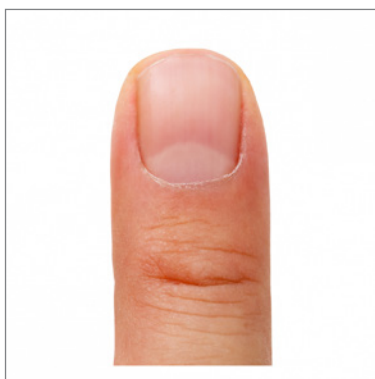
ACEITERA



UVA



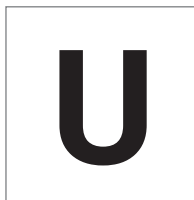
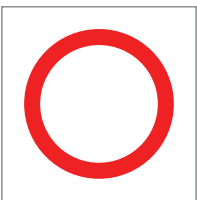
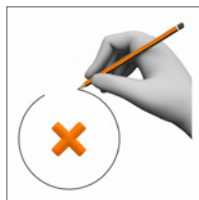
OVEJA



UÑA



IMPERDIBLE



Rodea en rojo las fotos que empiecen por **U**



OSITO



ABEJA



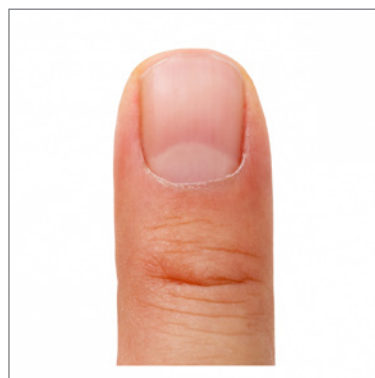
ESCALERA



ESPONJA



ESTRELLA



UÑA



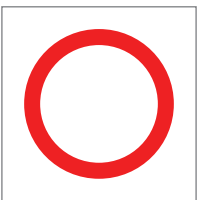
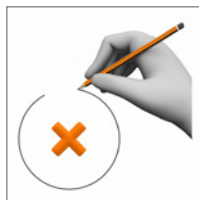
UVA



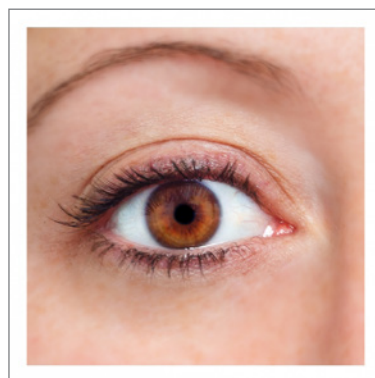
OLLA

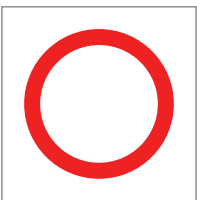
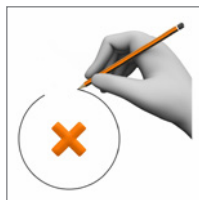


ARBOL



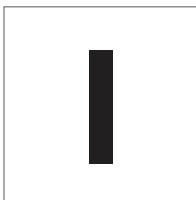
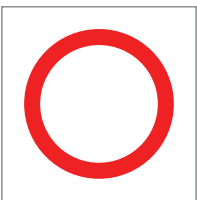
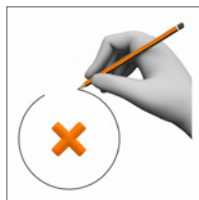
Rodea en rojo las fotos que empiecen por **A**





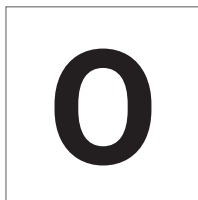
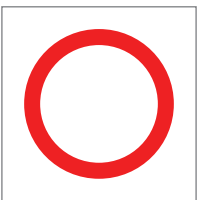
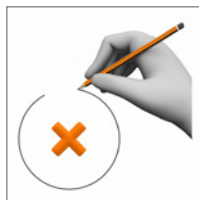
Rodea en rojo las fotos que empiecen por **E**



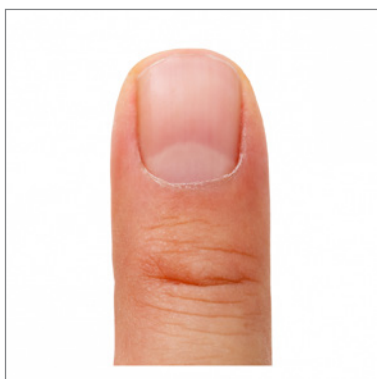
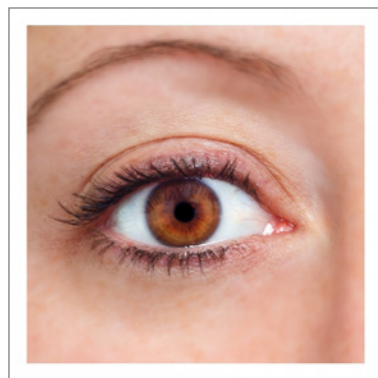


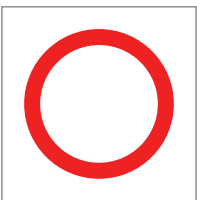
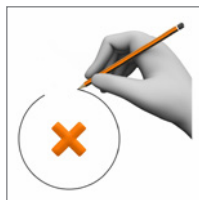
Rodea en rojo las fotos que empiecen por I



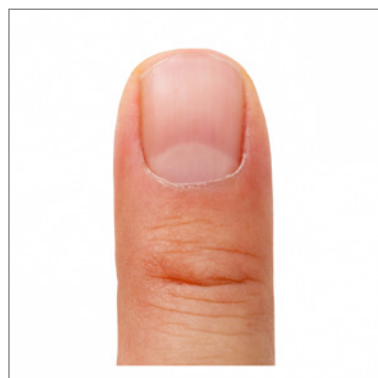


Rodea en rojo las fotos que empiecen por **O**



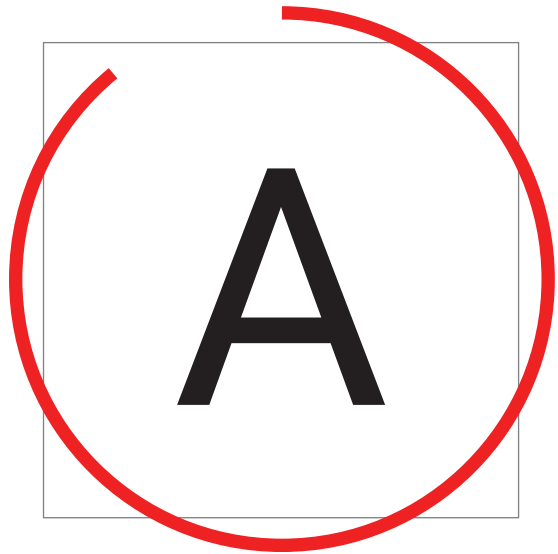
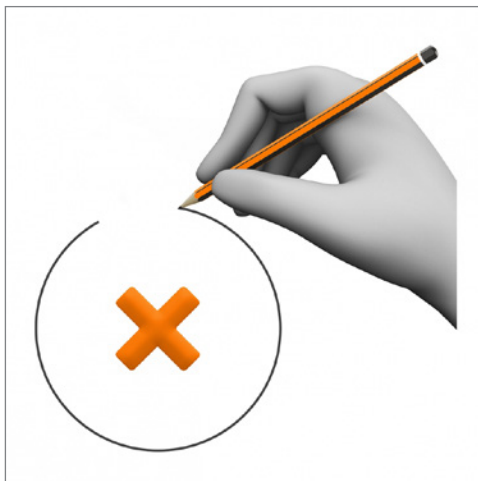


Rodea en rojo las fotos que empiecen por **U**

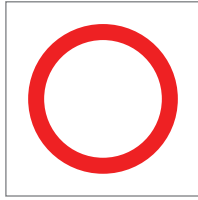
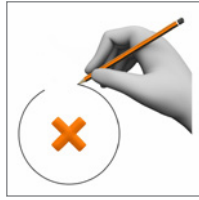


Lectoescritura en mayúsculas

VOCALES



Rodea de rojo las vocales
indicadas en cada ficha.



Rodea de rojo la vocal **A**

A E O U A I O U

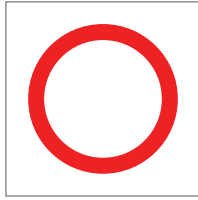
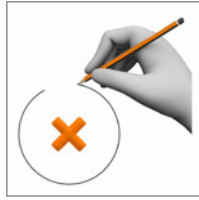
E I O U A O E

E I O U A E

ESPONJA ARBOL IMPERDIBLE

ABANICO UÑA ESTRELLA

OVEJA UVA ABEJA



Rodea de rojo la vocal **E**

O I E A U O A E

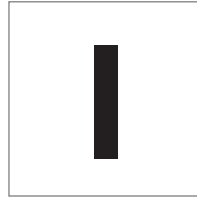
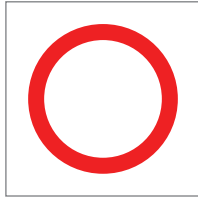
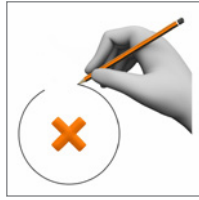
I O U E I A E O

A U E I O I E

ABANICO ESTRELLA ABEJA

OSITO ESCURRIDOR ESCALERA

IMPRESORA OJO OVEJA



Rodea de rojo la vocal **i**

A E I O A E I U

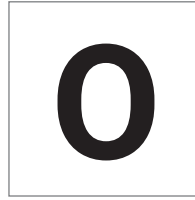
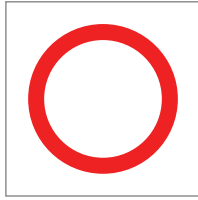
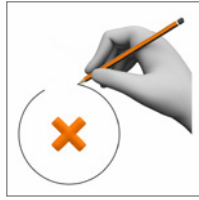
E I O A E I O I

U A O U I E I

IMPERDIBLE ESCALERA UÑA

ACEITERA ESPONJA OSITO

ESCURRIDOR IMPRESORA UVA



Rodea de rojo la vocal **o**

O U O E I O A I

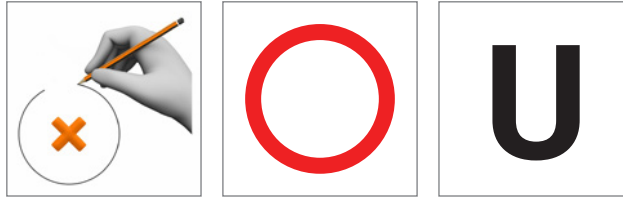
A U E O A O A E

O E U O E A U

ABANICO AJO ESPONJA

OJO UÑA UVA IMPRESORA

ESCALERA OSITO ESCURRIDOR



Rodea de rojo la vocal **U**

E A U I A A U E

U A I U E A E I

A U O U A U O

ESCURRIDOR UÑA ESCALERA

UVA OSITO ABANICO OLLA

OVEJA ABEJA ESTROPAJO